

Managed WiFi



Managed WiFi is a scalable, end-to-end wireless networking solution to manage wireless access, maximize security and provide a pleasant user experience, including comprehensive management tools, customized landing pages and user authentication.

Managed WiFi overview

Reliable connection of wireless and mobile devices to the Internet and internal networks is critical to businesses of all kinds. Spectrum Enterprise Managed WiFi is a turnkey solution that provides design, installation and operation of wireless infrastructure, ensuring high quality connectivity with reduced IT burden and no equipment to buy.

Spectrum Enterprise Managed WiFi networks are proactively monitored 24/7/365 to verify uptime and availability throughout one or multiple locations.

- **Ensure network performance:** Highly competitive service level objectives (SLOs) help ensure optimal network performance and availability to support mission-critical wireless operations
- **Reinforce your brand:** Utilize customizable landing pages and splash/user authentication pages to reinforce your brand
- **Enjoy dedicated support:** Rely on dedicated support teams to provide 24/7/365 client care and proactive monitoring, backed by local technical expertise

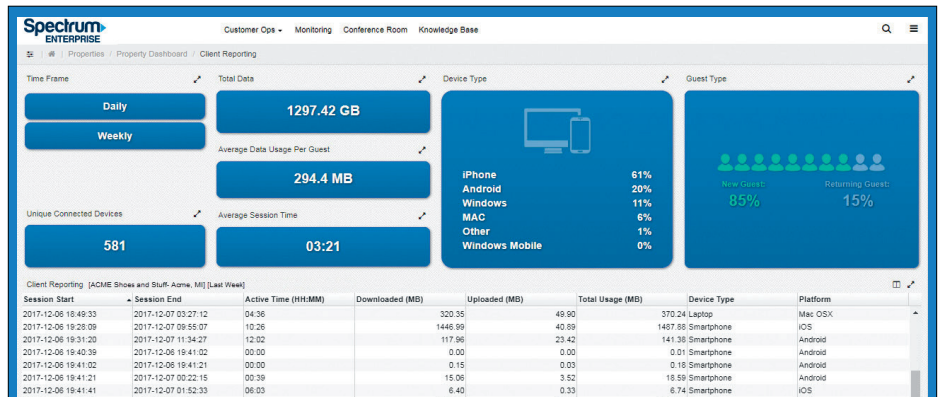
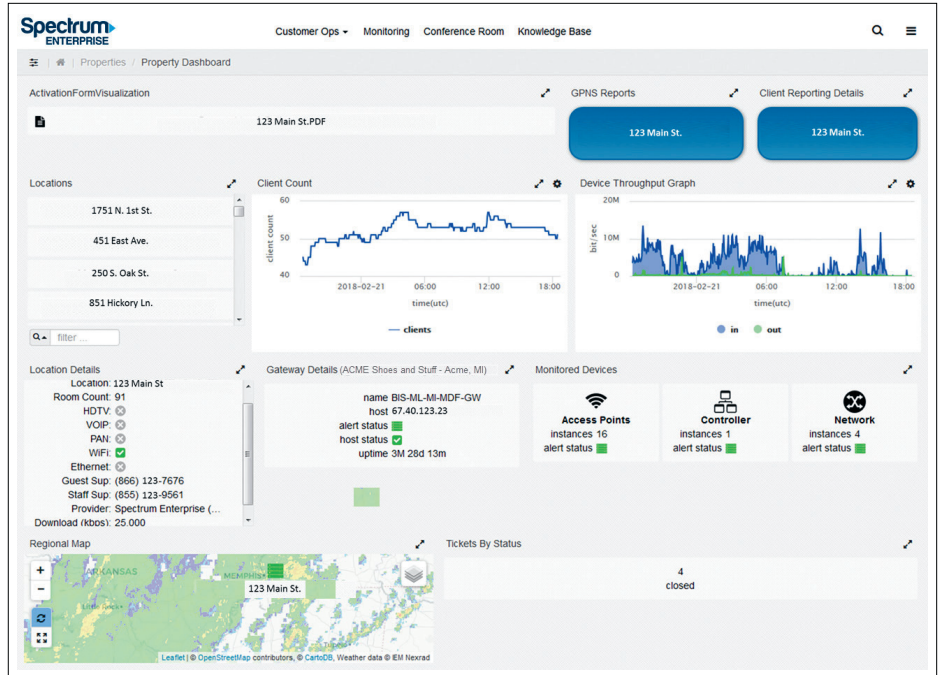
Key features

- **Ensure flexibility and scalability:** Leverage high-speed connectivity of Fiber Internet Access service and allocate the appropriate bandwidth to support different usage needs across one or several locations
- **Enable end-to-end management:** Utilize the admin portal and conference room scheduler for added visibility and control over your WiFi network and to review session information, such as connected devices, data use and if connections are returning or new clients.
- **Utilize system and device configurations:** Prioritize, modify and manage bandwidth allocations among user tiers while supporting paid and free WiFi options across a variety of WiFi-enabled devices

Managed WiFi Admin Portal

The Managed WiFi Admin Portal brings you the benefits of superior network visibility and data intelligence with password-protected online access.

- View network utilization stats
- Generate technology, statistics, trend and security reports that include:
 - Type of equipment, equipment name, IP address, equipment location, equipment status and duration of status
 - Individual log history for each piece of equipment
 - Historical information
 - As-built documentation
- Session Reporting
 - Track session use by time connected, device type, session data usage and platform OS type
 - Dashboard shows summary statistics of daily or weekly session data, connected devices and new versus returning clients



Learn more

enterprise.spectrum.com

About Spectrum Enterprise

Spectrum Enterprise, a part of Charter Communications, Inc., is a national provider of scalable, fiber technology solutions serving America’s largest businesses and communications service providers. The broad Spectrum Enterprise portfolio includes networking and managed services solutions: Internet access, Ethernet access and networks, Voice and TV solutions. Spectrum Enterprise’s industry-leading team of experts works closely with clients to achieve greater business success by providing solutions designed to meet their evolving needs. More information about Spectrum Enterprise can be found at enterprise.spectrum.com.

